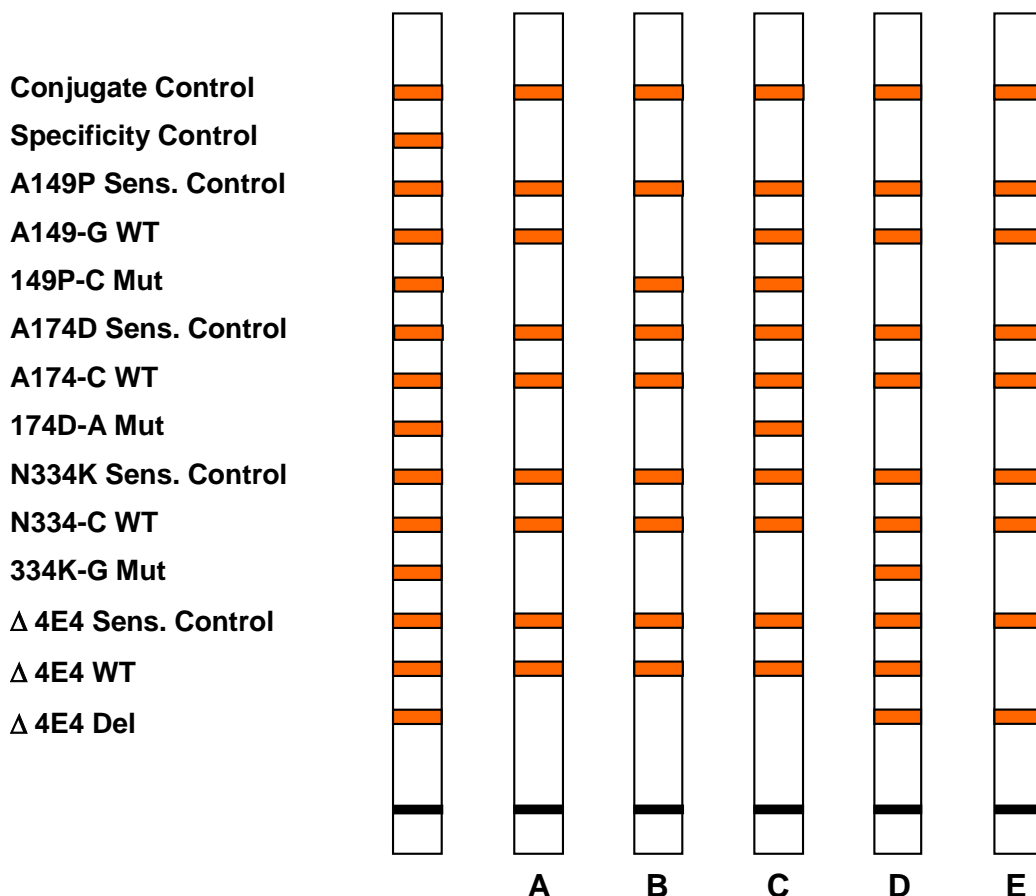


## Hereditary Fructose Intolerance (HFI): Mutations within the Aldolase B Gene



**Possible genotypes in Aldolase B gene and their interpretation:**

- A) All four gene loci are wild type.
- B) Homozygous carrier for A149P mutation.
- C) Heterozygous carrier for A149P and A174D, compound heterozygote.
- D) Heterozygous carrier for N334K and Δ4E4, compound heterozygote.
- E) Homozygous carrier for Δ4E4 deletion.



<b>Cat. no.:</b>	
RDB2175	12 tests
RDB2175X	60 tests